A woman with brown hair in a braid, wearing a blue V-neck scrub top and matching blue scrub pants, stands smiling against a white background. A green plant is visible in the bottom right corner.

encompass®



WHITE
SWAN®
BRANDS

Quality **Style** *& Comfort*

A collection of our best-selling professional healthcare apparel.

Safe &
Comfortable

Fitting for
a Group

Group
Customization



Table of Contents

JOCKEY® SCRUBS

We mean it when we say Jockey® Scrubs are “The Most Comfortable Scrubs You’ll Ever Wear®.” We are so confident that you will LOVE your Jockey Scrubs that they are backed by our 100% satisfaction comfort guarantee. That’s risk-free shopping - Guaranteed!

04

META® LABWEAR

With over 120 years of experience, Meta® is the trusted leader in labcoats. Meta® has a labcoat for your entire career, from student to tenured professional. Meta for life!

32

META® SCRUBS

Professional and safety conscious scrubs with stretch and breathability to keep pace with the everyday demands of your profession. Blends of luxurious fabrics and trims with insightful thought to every detail.

48

FUNDAMENTALS®

Fundamentals are affordable, durable & professionally styled to be the core of your wardrobe. Covering a range of colors and sizes, Fundamentals is our most-group friendly core line.

56



JOCKEY®

SCRUBS

THERE'S ONLY ONE JOCKEY®.

COMFORT GUARANTEE

Jockey® Scrubs continues to be the superior brand in the healthcare industry, and we guarantee their comfort. That's why we call them...

**“THE MOST COMFORTABLE SCRUBS
YOU’LL EVER WEAR®.”**

The fabric is the best tri-blend stretch fabric in the industry, designed not to fade, shrink or pill. We are so confident that you will love your Jockey Scrubs that they are backed by the risk-free Jockey® Comfort Guarantee – if, for whatever reason, at any time you are not happy with your scrubs, you can receive a full refund or replacement.

**JOCKEY® SCRUBS
GUARANTEED FOR YOUR TEAM!**



The Favorite V-NECK TOP

Unique v-neck styling offers a feminine touch. Two top loading pockets with a signature zippered pocket for added security. Side seam hem venting for easy all-day movement.

TRI-BLEND FABRIC:

72% polyester

21% rayon

7% spandex

LENGTH: 27"

POCKETS: 3

SIZES: XXS-5X

STYLE # 2206

Colors



015

Black



064

Royal



054

New Navy



1054

Pewter



046

Ceil



017

Teal



080

Caribbean



1004

Charcoal



122

Purple



1031

Galaxy



1240

Plumberry
Wine



True Fit CROSSOVER V-NECK TOP

High crossover neckline creates an updated v-neckline. Front yoke ID badge loop keeps your ID secure. Unique four pocket design has two top loading on-seam pockets with two side entry signature zippered pockets. Side vents for ease of movement

TRI-BLEND FABRIC:

72% polyester

21% rayon

7% spandex

LENGTH: 26"

POCKETS: 4

SIZES: XS-3X

STYLE # 2299

Colors

046

Ceil

064

Royal

1004

Charcoal

122

Purple

015

Black

054

New Navy

1240

Plumberry
Wine



Curves Ahead

MOCK WRAP TOP

Clean-finished mock wrap neckline with princess seaming for a universally flattering fit. Forward shoulder seam ID badge loop keeps your ID secure. Unique top loading pockets with two additional signature zippered pockets on top and one hidden media pocket. Side seam hem venting for easy all-day movement.

TRI-BLEND FABRIC:

72% polyester

21% rayon

7% spandex

LENGTH: 26"

POCKETS: 5 (1 hidden)

SIZES: XS-3X

STYLE # 2306

Colors

046

Ceil

064

Royal

1054

Pewter

122

Purple

015

Black

054

New Navy

017

Teal



Comfort CREW TOP



Clean finished round neckline and raglan style sleeve that gives you a professional look with the comfort of your favorite tee. Store all your gear with two angled top loading pockets with additional media and pen slots inside and secure badge loop. Side hem venting for all-day comfort.

TRI-BLEND Fabric:

72% polyester 21% rayon 7% spandex

LENGTH: 25" **POCKETS:** 3 - PLUS 4 PEN SLOTS

SIZES: XS-2X **STYLE # 2479**



MODERN FIT



Black



Royal



New Navy



Charcoal



Ladies Petal Wrap Top

Modern mock wrap design paired with a sleek tulip hem peplum provides an elegant, flattering fit. A chic, modified mandarin collar adds to the style of this top.

This peplum top features two top-loading pockets with an additional pocket perfect for a cell phone. Designed with side vents for added comfort.

TRI-BLEND FABRIC:

72% polyester 21% rayon 7% spandex

SIZES: XXS-3X STYLE # 2482

LENGTH: 26.75" POCKETS: 3

Colors



015

Black



1031

Galaxy



054

New Navy



1054

Pewter



MODERN FIT





Sleek Scrub Top

HENLEY NECK TOP

Wear it tucked in, half tucked in, or not tucked in at all - looks great any way you prefer to wear it. Sleek and professional. Three pockets to carry all your gear. Left chest and two hidden sideseam pockets.

This top sports a badge friendly elastic loop, Figure flattering vents for easy on and off! Easy pull over with one button henley.

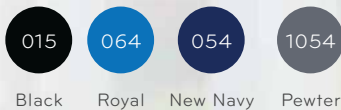
TRI-BLEND FABRIC:

72% polyester 21% rayon 7% spandex

SIZES: XS-3X STYLE # 2480

LENGTH: 26" POCKETS: 3

Colors



Black Royal New Navy Pewter



Women's Cargo

SCRUB JOGGER

Designed for maximum comfort on a demanding shift, the Jockey® Women's Cargo Scrub Jogger will be your new favorite work pant. Crafted with a tri-blend fabric for a comfy fit, these "Jargo"-style pants feature four pockets—two side-hugging curved cargo pockets and two side pockets—to securely carry all your gear as you move through your shift. The fabric-covered elastic waistband with a drawstring closure offers a custom fit, while the smaller leg opening is designed to stay in place. Available in petite or regular.

TRI-BLEND FABRIC:

72% polyester , 21% rayon , 7% spandex

INSEAM: 29" REG / 27" PETITE

POCKETS: 5 (1 hidden)

SIZES: XS-3X, XSP-XLP

STYLE # 2520

Colors



015

Black



064

Royal



054

New Navy



1054

Pewter



JOCKEY[®]

SCRUBS

THERE'S ONLY ONE JOCKEY[®].

COMFORT GUARANTEE

JOCKEY[®] SCRUBS
GUARANTEED FOR YOUR TEAM!



The Favorite FIT PANT

Half elastic back and half drawstring front for maximum comfort. Two front angled pockets plus cargo with signature zippered pocket offer incredible security and storage. Side vents for ease of movement. 19" leg opening with a slight flare. 31 1/2" inseam.

TRI-BLEND Fabric:

72% polyester

21% rayon

7% spandex

INSEAM: 31.5" REG, 33.5" TALL, 29.5" PETITE

SIZES: XXS-5X, XSP-2XP, XST-XLT

POCKETS: 4

STYLE # 2249

Colors

015

Black

064

Royal

054

New Navy

1054

Pewter

1004

Charcoal

080

Caribbean

046

Ceil

017

Teal

122

Purple

1031

Galaxy

1240

Plumberry
Wine

Extreme COMFY PANT

Relaxed fit and slightly flared leg to ensure the ultimate comfort. Full elastic waist design with drawstring closure. Multi-pockets all in front for all-day functionality and lots of storage options. Vented leg openings for ease of movement. 18" leg opening with 31 1/2" inseam.

TRI-BLEND FABRIC:

72% polyester

21% rayon

7% spandex

INSEAM: 31.5" REG,

33.5" TALL, 29.5" PETITE

SIZES: XS-5X, XSP-2XP, ST-XLT

POCKETS: 4

STYLE # 2377

Colors



Royal Charcoal Purple



Black New Navy





Ladies Petal Tapered Pant

All the pockets you need, including a security zip pocket in the side seam and three curved hip pockets.

Drawstring waist with a flat front finish and elastic back. Slim narrow leg that finishes with a curved 4" vent for easy on/off. 14" leg opening with 32" inseam.

TRI-BLEND FABRIC:

72% polyester 21% rayon 7% spandex

SIZES: XXS-3X, XSP-XLP **STYLE # 2484**

INSEAM: 32" REG / 30" PETITE

POCKETS: 4

Colors



MODERN FIT

Black

Galaxy

New Navy

Pewter





Jockey® Jogger JARGO PANT

IT'S A JOGGER. IT'S A CARGO.
IT'S A JARGO!

Designed to help you carry all your needed gear while still looking your professional best. Busy shifts are demanding, so we took that into account by designing 2 side-hugging curved cargo pockets that keep things in place and prevent items from slipping out of your pockets. We also added 2 hidden front seam pockets for extra flattering storage.

Our covered elastic waist with drawstring closure is both soft and comfortable. Finishing it off is our 3" matching rib knit cuff, designed to stay in place. The Jargo can be worn anywhere!

TRI-BLEND FABRIC:

72% polyester 21% rayon 7% spandex

INSEAM: 32" REG / 30" PETITE

SIZES: XS-3X, XSP-XLP **POCKETS:** 4 **STYLE # 2481**

Colors



Black Royal New Navy Pewter



Soft Comfort

YOGA PANT

Contoured yoga waistband gently hugs and flatters. Secure side leg welt pocket creates an uncomplicated look. 19" leg opening with a straight leg 31" inseam.

TRI-BLEND Fabric:

72% polyester

21% rayon

7% spandex

INSEAM: 31"

POCKETS: 1

SIZES: XS-XL

STYLE # 2358

Colors

015

064

054

1004

Black Royal New Navy Charcoal



MODERN FIT



The Ultimate MATERNITY PANT

Pure comfort front and back stretch panel. Two front and two back hip pockets. Mock fly detail. Side vents for ease of movement. 16" leg opening with 31 ½" inseam.

TRI-BLEND Fabric:

72% polyester
21% rayon
7% spandex

INSEAM: 31.5"

SIZES: XS-3X

POCKETS: 4

STYLE # 2459

Colors

015

054

1004

Black New Navy Charcoal



*Pure Comfort
Front and Back!*



Empire Waist MATERNITY TOP



Keyhole neckline detail offers a feminine touch. Empire waist with adjustable back ties gives a customizable fit. Two front patch pockets to hold your gear.

TRI-BLEND Fabric: 72% polyester 21% rayon 7% spandex

LENGTH: 26.5" **POCKETS:** 2

SIZES: XS-3X **STYLE #** 2461



Black New Navy Charcoal

Snap To It

WARM-UP JACKET

Round neckline with color matching cap snap closure. Front and back princess seams with two top loading, roomy pockets and hidden media pocket. Soft stretch color matched knit cuffs.

TRI-BLEND FABRIC:

72% polyester, 21% rayon, 7% spandex

LENGTH: 28"

POCKETS: 3

SIZES: XS-3X

STYLE # 2356

Colors

- | | | | |
|--------|--------|----------------|----------|
| 015 | 064 | 054 | 1054 |
| Black | Royal | New Navy | Pewter |
| 046 | 017 | 080 | 1004 |
| Ceil | Teal | Caribbean | Charcoal |
| 122 | 1031 | 1240 | |
| Purple | Galaxy | Plumberry Wine | |





Zip and Go

UNISEX JACKET

Stand up collar with clean finished zipper front closure to give you style and function. Invisible zippered chest pocket and two side entry pockets made to hold everything you need.

TRI-BLEND FABRIC:

72% polyester

21% rayon

7% spandex

LENGTH: 26.5"

POCKETS: 3

SIZES: XS-3X

STYLE # 2477



MODERN FIT

Colors



Black

Royal

New Navy

Charcoal



JOCKEY[®]

SCRUBS

THERE'S ONLY ONE JOCKEY[®].

COMFORT GUARANTEE

UNISEX





Four Pocket UNISEX TOP

Banded v-neck design for a classic, professional look.

Forward dropped shoulder with badge loop for maximum comfort. Four pockets for all your gear. Side vents allow for easy mobility.

TRI-BLEND FABRIC:

72% polyester,
21% rayon,
7% spandex

LENGTH: 28"

POCKETS: 4

SIZES: XS-3X

STYLE # 2371



Colors



015



054



1004

Black New Navy Charcoal



One Pocket UNISEX TOP

Banded v-neck design for a classic, professional look. Classic front and back shoulder yoke detailing. Topstitching details provide extra strength and style. Chest pocket stores personal items. Side vents allow for easy mobility.

TRI-BLEND FABRIC:

72% polyester 21% rayon 7% spandex

LENGTH: 28" POCKETS: 1 SIZES: XS-4X STYLE # 2200

- 015
Black
- 064
Royal
- 054
New Navy
- 1054
Pewter

- 080
Caribbean
- 046
Ceil
- 017
Teal
- 1004
Charcoal
- 1031
Galaxy

Men's Everything PANT

Adjustable waistband with full elastic and inside drawstring for maximum comfort. Fully functional zipper fly, five belt loops and two front side slash pockets. Right cargo pocket features inside phone pocket, and left divided cargo pocket for pens and instruments. Two secure, back-zippered welt pockets with inside bags hold wallet and phone on the inside. 19" leg opening, straight leg inseam 31".

TRI-BLEND FABRIC:

72% polyester

21% rayon

7% spandex

POCKETS: 7

INSEAM: 31" REG, 33" TALL, 28" SHORT

SIZES: XS-4X; SSH-LSH; ST-XLT

STYLE # 2305

Colors

015

064

054

1054

Black

Royal

New Navy

Pewter

046

017

1004

1031

080

Ceil

Teal

Charcoal

Galaxy

Caribbean



The Best **UNISEX PANT**

The most comfortable unisex pant in the industry. Full drawstring tie-waist has back elastic for maximum adjustability and comfort. Slimmer silhouette flatters both men and women. Deep cargo pocket on thigh is ideal for storage. Back hip pocket with self-adhesive hook and loop closure keeps valuables secure. 19" leg opening with 31" inseam.

TRI-BLEND FABRIC:

72% polyester

21% rayon

7% spandex

INSEAM: 31" REG

SIZES: XS-3X

POCKETS: 2

STYLE # 2338

Colors

015

054

1004

Black New Navy Charcoal

All colors and styles are in stock and reorderable.

We are so confident that you will LOVE your Jockey Scrubs that they are backed by our 100% satisfaction comfort guarantee. That's risk-free shopping - Guaranteed!

TRI-BLEND FABRIC:
72% polyester, 21% rayon, 7% spandex
Product is imported.

									
2206 LADIES V-NECK TOP XXS - 5X LENGTH 27"	2306 LADIES MOCK WRAP TOP XS - 3X LENGTH 26"	2299 LADIES CROSSOVER TOP XS - 3X LENGTH 26"	2479 LADIES CREW NECK TOP XS - 2X LENGTH 25"	2356 LADIES SNAP FRONT JACKET XS - 3X LENGTH 28"	2249 LADIES 1/2 ELASTIC, 1/2 DRAWSTRING CARGO PANT INSEAM 31.5" R, 33.5" T, 29.5" P XXS-5X, XSP-2XP, XST-XLT	2377 LADIES FULL ELASTIC WITH DRAWSTRING PANT INSEAM 31.5" R, 33.5" T, 29.5" P XS - 5X XSP-2XP, ST-XLT	2358 LADIES YOGA PANT INSEAM 31" XS-XL	2461 MATERNITY TOP XS - 3X LENGTH 26.5"	2459 MATERNITY PANT INSEAM 31.5" REG XS - 3X

015 BLACK	015 BLACK	015 BLACK	015 BLACK	015 BLACK	015 BLACK	015 BLACK	015 BLACK	015 BLACK	015 BLACK
054 NEW NAVY	054 NEW NAVY	054 NEW NAVY	054 NEW NAVY	054 NEW NAVY	054 NEW NAVY	054 NEW NAVY	054 NEW NAVY	054 NEW NAVY	054 NEW NAVY
064 ROYAL	064 ROYAL	064 ROYAL	064 ROYAL	064 ROYAL	064 ROYAL	064 ROYAL	064 ROYAL		
1004 CHARCOAL		1004 CHARCOAL	1004 CHARCOAL	1004 CHARCOAL	1004 CHARCOAL	1004 CHARCOAL	1004 CHARCOAL	1004 CHARCOAL	1004 CHARCOAL
1031 GALAXY				1031 GALAXY	1031 GALAXY				
017 TEAL	017 TEAL			017 TEAL	017 TEAL				
046 CEIL	046 CEIL	046 CEIL		046 CEIL	046 CEIL				
1054 PEWTER	1054 PEWTER			1054 PEWTER	1054 PEWTER				
080 CARIBBEAN				080 CARIBBEAN	080 CARIBBEAN				
1240 PLUMBERRY/WINE		1240 PLUMBERRY/WINE		1240 PLUMBERRY/WINE	1240 PLUMBERRY/WINE				
122 PURPLE	122 PURPLE	122 PURPLE		122 PURPLE	122 PURPLE	122 PURPLE			

JOCKEY[®]

SCRUBS

THERE'S ONLY ONE JOCKEY[®].



015 BLACK	015 BLACK	015 BLACK	015 BLACK	015 BLACK	015 BLACK	015 BLACK	015 BLACK	015 BLACK	015 BLACK
054 NEW NAVY	054 NEW NAVY	054 NEW NAVY	054 NEW NAVY	054 NEW NAVY	054 NEW NAVY	054 NEW NAVY	054 NEW NAVY	054 NEW NAVY	054 NEW NAVY
064 ROYAL			064 ROYAL	064 ROYAL	064 ROYAL	064 ROYAL			064 ROYAL
1004 CHARCOAL	1004 CHARCOAL	1004 CHARCOAL	1004 CHARCOAL	1004 CHARCOAL					
1031 GALAXY				1031 GALAXY			1031 GALAXY	1031 GALAXY	
017 TEAL				017 TEAL					
046 CEIL				046 CEIL					
1054 PEWTER				1054 PEWTER	1054 PEWTER	1054 PEWTER	1054 PEWTER	1054 PEWTER	1054 PEWTER
080 CARIBBEAN				080 CARIBBEAN					

Products described in this catalog are made from imported fabrics.

Elevated **Style** *& Comfort*

Make your rounds in total comfort with the durable and stylish Jockey® Unisex Lab Coat.

Crafted with a heavyweight poplin fabric, this sturdy staple resists stains and wrinkles for a clean, sharp look.

The elevated style features a tailored, semi-relaxed fit with a pleated back and sewn-down belt.

*Coming
Soon!*





JOCKEY® SCRUBS MEASURE UP!

◀ Scan the QR Code to view our fitting video.

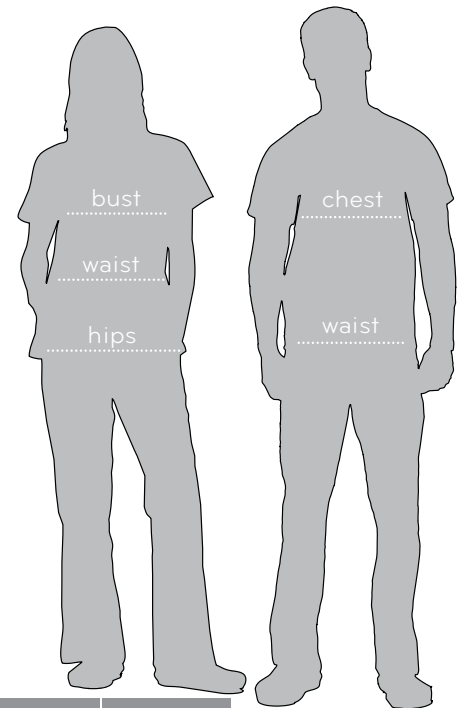
Fit tested and expertly crafted. So you look and feel your best all day long.

MEASURING BASICS

Bust & Chest: Place measuring tape under armpits and extend the tape around the broadest section of your chest.

Waist: Place tape around your natural waistline.

Hips: Stand with feet 2-4 inches apart and measure around the fullest part of your hips.



INSEAM CHART

	Standard	Petite	Unisex	Men's	Standard	Unisex-Tall	Tall
Inseam Length	31½"	29½"	31"	31"	31½"	33"	33½"

CLASSIC WOMEN'S SIZE CHART

	XXS	XS	S	M	L	XL	2X	3X	4X	5X
Size	0	2-4	6-8	10-12	14-16	18-20	20W-22W	24W-26W	28W-30W	32W-34W
Bust	30-31	32-33	34-36	37-39	40-42	43-46	47-50	51-54	55-58	59-62
Waist	22-23	24-25	26-27	28-30	31-33	34-37	38-41	42-45	46-49	50-53
Hips	32-33	34-35	36-38	39-41	42-44	45-48	49-52	53-56	57-60	61-64

MODERN WOMEN'S SIZE CHART

	XXS	XS	S	M	L	XL	2X	3X
Size	0	2-4	6-8	10-12	14-16	18-20	20W-22W	24W-26W
Bust	30	32	34	37	41	44	48	52
Waist	22	24	26	29	32	36	40	44
Hips	32	34	36	39	43	47	51	54

MEN'S SIZE CHART

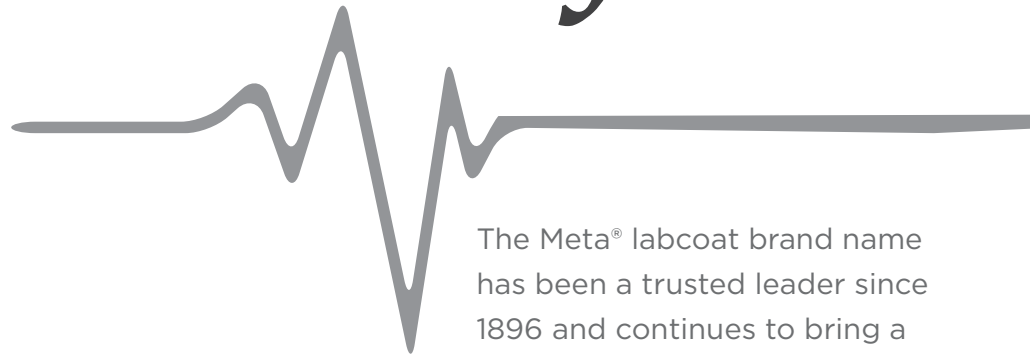
	XS	S	M	L	XL	2X	3X	4X
Men's size (chest)	30-32	34-36	38-40	42-44	46-48	50-52	54-56	58-60
Men's waist	24-26	28-30	32-34	36-38	40-42	44-46	48-50	52-54

UNISEX SIZE CHART

	XS	S	M	L	XL	2X	3X	4X
Men's size (chest)	30-32	34-36	38-40	42-44	46-48	50-52	54-56	58-60
Men's waist	24-26	28-30	32-34	36-38	40-42	44-46	48-50	52-54
Women's size	2-4	6-8	10-12	14-16	18-20	20W-22W	24W-26W	28W-30W



Trusted **Style** *& Comfort*



The Meta® labcoat brand name has been a trusted leader since 1896 and continues to bring a perfect blend of style, function, fit and comfort. A variety of performance fabrics are used to provide the features and details that your team is looking for. With the widest array of styles and sizes in the industry, Meta has been the go-to labcoat of choice for professionals throughout their careers. Find out what makes Meta right for your team.

META *FOR*
LIFE



1963 MEN'S 38" COAT



Length	38" Long Coat
Sizes	32-60, 38L-56L
Fabric	65/35 Fine Line Twill 5.5 oz. sq/yd
6 Pockets	<ul style="list-style-type: none"> • 2 Lower Patch Pockets— one with inside cell pocket • 1 Breast Pocket • 2 Inside Pockets • 1 Oversized to Hold iPad* • Hand Access Slits • Pen Divider on Chest Pocket • Pleated Back with Sewn Down Belt



META® LABWEAR

META FOR LIFE



Length	37" Long Coat
Sizes	0-20, 40-48, 8T-20T
Fabric	80/20 Super Blend Twill 5.0 oz. sq/yd

6 Pockets

- 2 Lower Patch Pockets— one with inside cell pocket
- 1 Breast Pocket
- 2 Inside Pockets
- 1 Oversized to Hold iPad®
- Hand Access Slits
- Pen Holder in Breast Pocket
- Edge Stitched Front Sewn Down Back Belt with Accent Darts Above and Pleats Below

1964 WOMEN'S 37" COAT



161 WOMEN'S 37" COAT



267 MEN'S 40" COAT

Length	37" Long Coat
Sizes	0-20
Fabric	65/35 Performance Poplin 5.2 oz. sq/yd
5 Pockets	<ul style="list-style-type: none"> • 2 Inside Pockets • Princess Back with Belt • Hands Access Slits • Scissors Holder

Length	40" Long Coat
Sizes	34-48
Fabric	65/35 Performance Poplin 5.2 oz. sq/yd
5 Pockets	<ul style="list-style-type: none"> • 2 Inside Pockets • Fully Finished Hand Access Slits • Scissors Holder • 2-Piece Swing Belt • Pen Divider on Chest Pocket



762 MEN'S 40" KNOT BUTTON iPAD COAT



763 WOMEN'S 38" KNOT BUTTON iPAD COAT

Length	40" Long Coat
Sizes	32-48
Fabric	100% Easy Care Cotton Twill 6.7 oz. sq/yd
5 Pockets	<ul style="list-style-type: none"> • 2 Lower Patch Pockets, one with Scissors Holder • 1 Breast Pocket with Pen Divider • 2 Inside Pockets, One Oversized to Hold iPad® • Hand Access Slits • Sewn Down Belt with Accent Darts

Length	38" Long Coat
Sizes	0-20
Fabric	100% Easy Care Cotton Twill 6.7 oz. sq/yd
5 Pockets	<ul style="list-style-type: none"> • 2 Lower Patch Pockets, one with Scissors Holder • 1 Breast Pocket with Pen Divider • 2 Inside Pockets, One Oversized to Hold iPad® • Hand Access Slits • Sewn Down Belt with Accent Darts



738 WOMEN'S 28" COAT



Length 28" Consult Coat

Sizes 0-20, 40-48, 8T-20T

Fabric 65/35 Fine Line Twill
5.5 oz. sq/yd

- 7 Pockets**
- 2 Lower Outside iPad® Pockets
 - 1 Hidden Cell Pocket
 - 1 Breast Pocket
 - 3 Inside Pockets
 - Front Darts
 - 3 Button Closure





META® LABWEAR

META FOR LIFE



Length	30" Consult Coat
Sizes	34-56, 38L-56L
Fabric	65/35 Fine Line Twill 5.5 oz. sq/yd
7 Pockets	<ul style="list-style-type: none"> • 2 Lower Outside iPad® Pockets • 1 Hidden Cell Pocket • 1 Breast Pocket • 3 Inside Pockets • Front Darts • 3 Button Closure

739 MEN'S 30" COAT



15000 WOMEN'S 33" COAT



15007 MEN'S 34" COAT

Length	33" Mid-Length Coat
Sizes	XXS-3X
Fabric	65/35 Poplin with Soil Release 5.2 oz. sq/yd
3 Pockets	<ul style="list-style-type: none"> • Pencil Pocket Stitch on Breast Pocket • 1-Piece Back • 3 Roomy Outside Pockets

Length	34" Mid-Length Coat
Sizes	S-3X
Fabric	65/35 Poplin with Soil Release 5.2 oz. sq/yd
3 Pockets	<ul style="list-style-type: none"> • Pencil Pocket Stitch on Breast Pocket • 1-Piece Back • 3 Roomy Outside Pockets



15113
WOMEN'S
37" COAT



15112
MEN'S
38" COAT

Length	37" Long Coat
Sizes	XXS-4X
Fabric	65/35 Performance Poplin 5.2 oz. sq/yd
3 Pockets	<ul style="list-style-type: none"> • Hand Access Slits • 1-Piece Back and Sleeve • 3 Roomy Outside Pockets

Length	38" Long Coat
Sizes	XS-5X
Fabric	65/35 Performance Poplin 5.2 oz. sq/yd
3 Pockets	<ul style="list-style-type: none"> • Hand Access Slits • 1-Piece Back • 2-Piece Sleeve • 3 Roomy Outside Pockets



15103 MEN'S 30" COAT



15104 WOMEN'S 28" COAT



Length	30" Consult Coat
Sizes	XS-3X
Fabric	65/35 Poplin with Soil Release 5.2 oz. sq/yd
3 Pockets	<ul style="list-style-type: none"> • 2-Piece Back and Sleeves • 3 Roomy Outside Pockets

Length	28" Consult Coat
Sizes	XXS-3X
Fabric	65/35 Poplin with Soil Release 5.2 oz. sq/yd
3 Pockets	<ul style="list-style-type: none"> • 1-Piece Back and Sleeves • 3 Roomy Outside Pockets



6116
UNISEX
40" COAT



6119
UNISEX
30" COAT

Length	40" Long Coat
Sizes	XXS-4X
Fabric	65/35 Performance Poplin 5.2 oz. sq/yd
4 Pockets	<ul style="list-style-type: none"> • 1 Inside Pocket • Hand Access Slits • 2-Piece Back Swing Belt

Length	30" Consult Coat
Sizes	XXS-3X
Fabric	65/35 Fine Line Twill 5.5 oz. sq/yd
7 Pockets	<ul style="list-style-type: none"> • Each Outside Lower Patch Pocket has Concealed Inside Pockets • 2 Inside Pockets • 2 Oversized Lower Pockets to Hold iPad® Each • Pen Divider on Chest Pocket



11653 UNISEX 40" COAT



808 UNISEX 44" COAT



1% Carbon Fiber

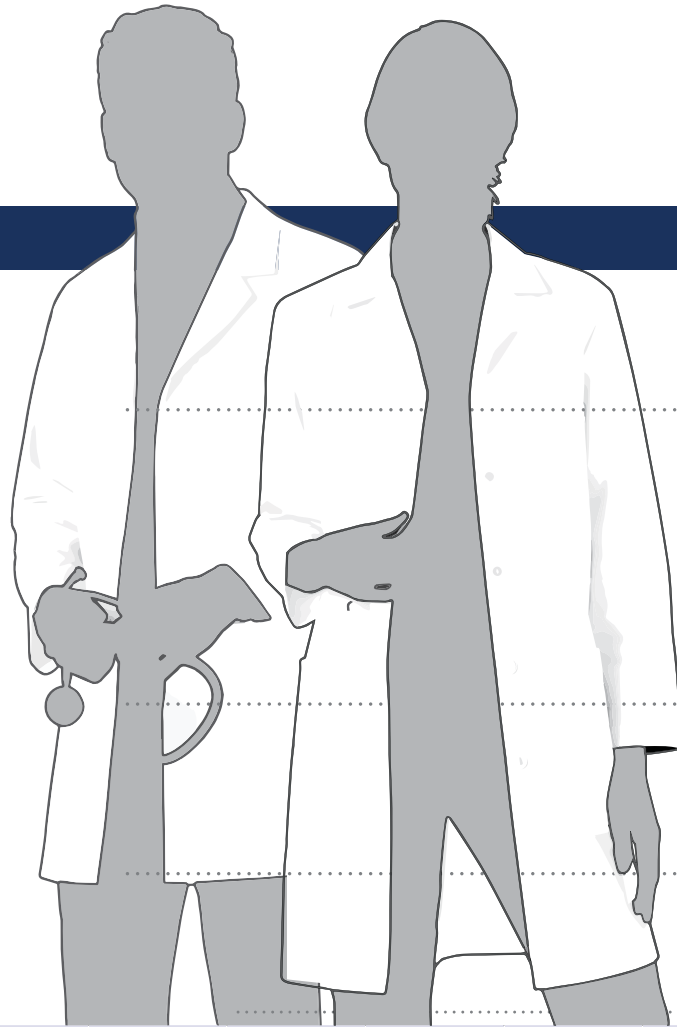
Length	40" Fluid Resistant Long Coat
Sizes	XS-3X
Fabric	99% Air Textured Polyester 1% Carbon Fiber (Carbon Fiber Shows as Pin Striping)
3 Pockets	<ul style="list-style-type: none"> • Fluid Resistant Button Closure at Neck for Full Coverage • Deep Back Vent for Lap Coverage when Seated • Back Pleat for Extra Movement • Knit Cuffs

Length	44" Heavyweight Long Coat
Sizes	32-54
Fabric	100% Heavyweight Cotton 8.6 oz per sq/yd
5 Pockets	<ul style="list-style-type: none"> • 5 French Knotted Buttons • 5 Pockets • 2 Lower Front Pockets, 2 Inside pockets And Pen Divider on Chest Pocket • 2 Piece Back Belt Partially Sewn Down • Hand Access Slits with Decorative Detail • Kick Pleat

size chart



Scan the QR Code to view our Meta fitting video.



BUST/
CHEST

WAIST/
CONSULT

MID
LENGTH

LONG

MEN'S META SIZE CHART

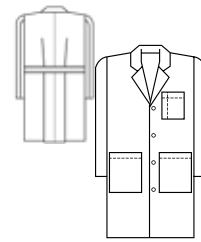
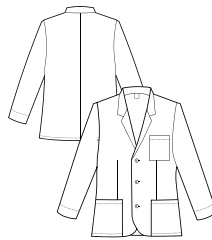
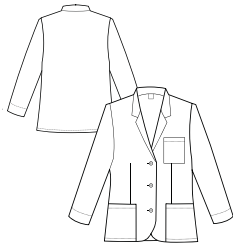
MEN'S	XS	S	M	L	XL	2X	3X	4X	5X
CHEST	30-32	34-36	38-40	42-44	46-48	50-52	54-56	58-60	62-64
WAIST	24-26	28-30	32-34	36-38	40-42	44-46	48-50	52-54	56-58

UNISEX SIZE CHART

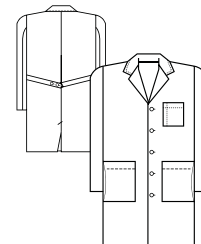
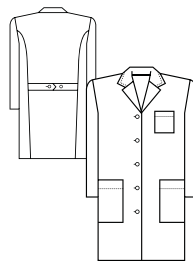
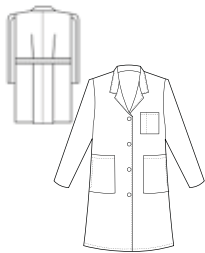
SIZE	XXS	XS	S	M	L	XL	2X	3X	4X
MEN'S	26-28	30-32	34-36	38-40	42-44	46-48	50-52	54-56	58-60
WOMEN'S	0-2	4-6	8-10	12-14	16-18	20w	22w-24w	26w-28w	30w-32w

WOMEN'S META SIZE CHART

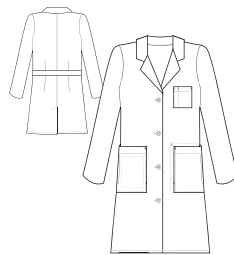
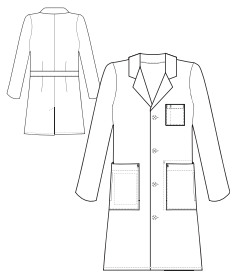
WOMEN'S	XXS	XS	S	M	L	XL	2X	3X	4X
SIZE	0-2	4-6	8-10	12-14	16-18	20-40 20-20W	42-44 22W-24W	46-48 26W-28W	50-52 30W-32W
BUST	31-32	33-34	35-36	37½-39	40½-42½	44½-46½	48½-50½	52½-54½	56½-58½
WAIST	22-23	24-25	26-27	28½-30	31½-33½	35½ - 37½	39½-41½	43½-45½	47½-49½
HIPS	32½-33½	34½-35½	36½-37½	39-40½	42-44	46 - 48	50-52	54-56	58-60



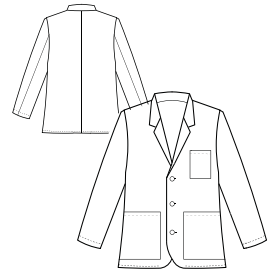
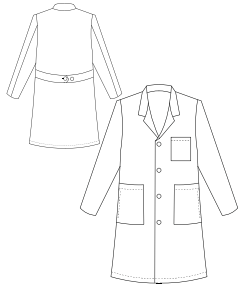
STYLE	738	739	1963
LENGTH	Women's 28" Consult Coat	Men's 30" Consult Coat	Men's 38" Long Coat
SIZES	0-20, 40-48, 8T-20T	34-56, 38L-56L	32-60, 38L-56L
FABRIC	65/35 Fine Line Twill 5.5 oz/sq yd	65/35 Fine Line Twill 5.5 oz/sq yd	65/35 Fine Line Twill 5.5 oz/sq yd
POCKETS	7	7	6



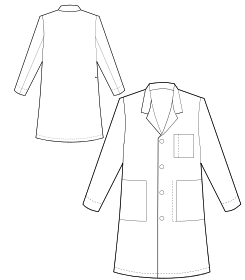
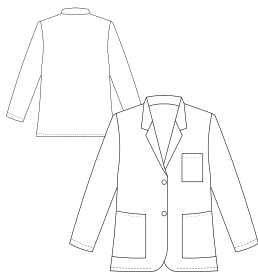
STYLE	1964	161	267
LENGTH	Women's 37" Long Coat	Women's 37" Long Coat	Men's 40" Long Coat
SIZES	0-20, 40-48, 8T-20T	0-20	34-48
FABRIC	80/20 Super Blend Twill 5.0 oz/sq yd	65/35 Performance Poplin 5.2 oz/sq yd	65/35 Performance Poplin 5.2 oz/sq yd
POCKETS	6	5	5



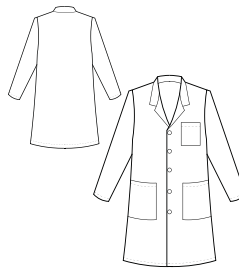
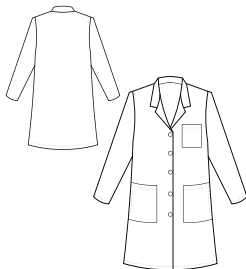
STYLE	762	763	808
LENGTH	Men's 40" Knot Button Long Coat	Women's 38" Knot Button Long Coat	Unisex 44" Long Coat
SIZES	32-48	0-20	32-54
FABRIC	100% Easy Care Cotton Twill 6.7 oz. sq/yd	100% Easy Care Cotton Twill 6.7 oz. sq/yd	100% Heavyweight Cotton 8.6 oz sq/yd
POCKETS	5	5	5



STYLE	6116	6119	15103
LENGTH	Unisex 40" Long Coat	Unisex 30" Consult Coat	Men's 30" Consult Coat
SIZES	XXS-4X	XXS-3X	XS-3X
FABRIC	65/35 Performance Poplin 5.2 oz/sq yd	65/35 Fine Line Twill 5.2 oz/sq yd	65/35 Poplin with Soil Release 5.2 oz/sq yd
POCKETS	4	7	3



STYLE	15104	15000	15007
LENGTH	Women's 28" Consult Coat	Women's 33" Mid-Length Coat	Men's 34" Mid-Length Coat
SIZES	XXS-3X	XXS-3X	S-3X
FABRIC	65/35 Poplin with Soil Release 5.2 oz/sq yd	65/35 Poplin with Soil Release 5.2 oz/sq yd	65/35 Poplin with Soil Release 5.2 oz/sq yd
POCKETS	3	3	3



STYLE	15113	15112	11653
LENGTH	Women's 37" Long Coat	Men's 38" Long Coat	Unisex 40" Long Coat
SIZES	XXS-4X	XS-5X	XS-3X
FABRIC	65/35 Poplin with Soil Release 5.2 oz/sq yd	65/35 Poplin with Soil Release 5.2 oz/sq yd	99% Air Textured Polyester 1% Carbon Fiber
POCKETS	3	3	3

Products described in this catalog are made from imported fabrics.

META[®]

scrubs

From bedside to boardroom.

Four colors, one mission — keep you safe and professional.

Anti-Mic finish helps reduce the presence of unwanted bacteria on the fabric surface.



Must Be Meta.

Professional **Style** & Comfort



Professional and safety-conscious scrubs with stretch and breathability to keep pace with the everyday demands of your profession.

15220

Meta® Scrubs **Unisex Zip Front Jacket**

- Front Yoke w/Badge Loop
- Two (2) Welt Hidden Front Seam Pockets
- Elastic Cuffs at Wrist for Safe Closure

Length: 26.25"

Sizes: XS-3X

Pro-Blend

77% Polyester,
20% Rayon, 3% Spandex
w/Antimicrobial Finish



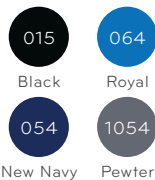


15200

Meta® Scrubs Ladies Ventral V Top

- Two (2) Slanted Side Pockets
- Utility Tape
- Princess Seams and Side Slits

Length: 26.5"
Sizes: XS-2X
Pro-Blend
 77% Polyester,
 20% Rayon, 3% Spandex
 w/Antimicrobial Finish



15202

Meta® Scrubs Men's V-Neck Top

- Two (2) Layer Chest Pocket
- Side Slits

Length: 28.5"
Sizes: S-3X
Pro-Blend
 77% Polyester,
 20% Rayon, 3% Spandex
 w/Antimicrobial Finish





META® SCRUBS

MUST BE META



15201

Meta® Scrubs Ladies Notch Top

- Mock Wrap
- Two (2) Lower Patch Pockets
- Side Slits

Length: 26.5"

Sizes: XS-2X

Pro-Blend

77% Polyester,
20% Rayon, 3% Spandex
w/Antimicrobial Finish



Black



Royal



New Navy



1054

Pewter



15211

Meta® Scrubs Men's Axis Cargo Jogger Pant

- Full Elastic Waist w/Drawstring
- Two (2) Side Slanted Zipper Pockets
- Two (2) Slanted Cargo Pockets
- Dyed to Match Cuffs

Inseam: 31.5"
Sizes: S-3X
Pro-Blend
 77% Polyester,
 20% Rayon, 3% Spandex
 w/Antimicrobial Finish

Black	Royal
New Navy	Pewter

15210

Meta® Scrubs Ladies Distal Cargo Jogger Pant

- Full Elastic Waist w/Drawstring
- Two (2) Side Slanted Zipper Pockets
- Two (2) Slanted Cargo Pockets
- Dyed to Match Cuffs

Length: 31.5", Petite 29.5"
Sizes: XS-2X, Petites XSP-XLP
Pro-Blend
 77% Polyester,
 20% Rayon, 3% Spandex
 w/Antimicrobial Finish

Black	Royal
New Navy	Pewter

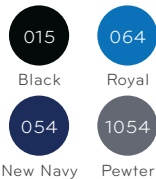


15222

Meta® Scrubs Unisex Five-Pocket Cargo Pant

- Full Elastic Waist w/Hidden Drawstring
- Two (2) Side Slanted Pockets
- Two (2) Roomy Cargo Pockets
- One (1) Right Rear Security Pocket w/Hidden Zipper

Inseam: 31"
Sizes: XS-3X
Pro-Blend
 77% Polyester,
 20% Rayon, 3% Spandex
 w/Antimicrobial Finish

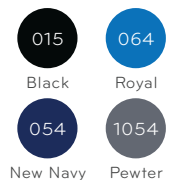


15226

Meta® Scrubs Ladies' Front Flat Cargo Pant

- Elastic Back with Drawstring Front
- Two (2) Side Slanted Pockets
- One (1) Slanted Cargo Pocket
- Vented Bottom Leg for Easy On/Off

Length: 31.5"
Sizes: XS-3X
Pro-Blend
 77% Polyester,
 20% Rayon, 3% Spandex
 w/Antimicrobial Finish



META[®]

scrubs

From bedside to boardroom.
Professional and safety-conscious scrubs with stretch and breathability to keep pace with the everyday demands of your profession.





15200
Ladies Ventral V Top

Length: 26.5" Sizes: XS-2X

Pro-Blend
77% Polyester, 20% Rayon, 3% Spandex
w/Antimicrobial Finish

015 Black
064 Royal
054 New Navy
1054 Pewter

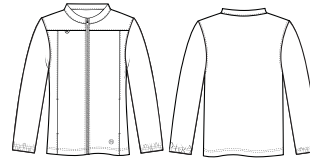


15202
Men's V-Neck Top

Length: 28.5" Sizes: S-3X

Pro-Blend
77% Polyester, 20% Rayon, 3% Spandex
w/Antimicrobial Finish

015 Black
064 Royal
054 New Navy
1054 Pewter



15220
Unisex Zip Front Jacket

Length: 26.25" Sizes: XS-3X

Pro-Blend
77% Polyester, 20% Rayon, 3% Spandex
w/Antimicrobial Finish

015 Black
064 Royal
054 New Navy
1054 Pewter



15201
Ladies Notch Top

Length: 26.5" Sizes: XS-2X

Pro-Blend
77% Polyester, 20% Rayon, 3% Spandex
w/Antimicrobial Finish

015 Black
064 Royal
054 New Navy
1054 Pewter



15210
Ladies Distal Cargo Jogger Pant

Length: 31.5"
Sizes: XS-2X, Petites XSP-XLP

Pro-Blend
77% Polyester, 20% Rayon, 3% Spandex
w/Antimicrobial Finish

015 Black
064 Royal
054 New Navy
1054 Pewter

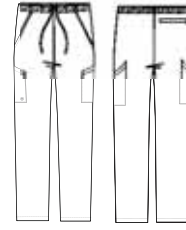


15211
Men's Axis Cargo Jogger Pant

Inseam: 31.5" Sizes: S-3X

Pro-Blend
77% Polyester, 20% Rayon, 3% Spandex
w/Antimicrobial Finish

015 Black
064 Royal
054 New Navy
1054 Pewter

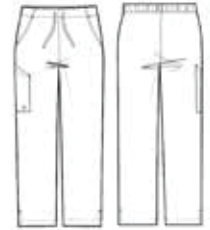


15222
Unisex Five-Pocket Cargo Pant

Inseam: 31" Sizes: XS-3X

Pro-Blend
77% Polyester, 20% Rayon, 3% Spandex
w/Antimicrobial Finish

015 Black
064 Royal
054 New Navy
1054 Pewter



15226
Ladies Front Flat Cargo Pant

Inseam: 31.5" Sizes: XS-3X

Pro-Blend
77% Polyester, 20% Rayon, 3% Spandex
w/Antimicrobial Finish

015 Black
064 Royal
054 New Navy
1054 Pewter

SIZE CHART

WOMEN'S	XS	S	M	L	XL	2X
SIZE	2-4	6-8	10-12	14-16	18-20	20W-22W
BUST	32	34	37	41	44	48
WAIST	24	26	29	32	36	40
HIPS	34	36	39	43	47	51

MEN'S / UNISEX	S	M	L	XL	2X	3X
CHEST	34-36	38-40	42-44	46-48	50-52	54-56
WAIST	28-30	32-34	36-38	40-42	44-46	48-50



fundamentals[®]

The Core of Your Healthcare Wardrobe.

The Fundamentals[®] collection is our most group-friendly collection. Get a professional look that has functional details on a budget. The Fundamentals collection is affordable fashion that is the core to your healthcare wardrobe.



14780

UNISEX SNAP FRONT WARM-UP JACKET

Features:

28" Length / Set-In
Sleeves / One Piece Back
Snap Front Closure

4 Pockets

2 Deep Patch Pockets,
1 with Hidden Cell Pocket,
1 Chest Pocket / Dyed to
Match Knit Cuffs

65% Polyester 35% Cotton
Poplin with Soil Release

Sizes: XS-5X

- | | | |
|----------|-------|----------|
| 011 | 014 | 015 |
| White | Navy | Black |
| 046 | 017 | 034 |
| Ceil | Teal | Hunter |
| 054 | 064 | 1004 |
| New Navy | Royal | Charcoal |



I4700

LADIES 2-POCKET TOP



015 BLACK



011 WHITE



034 HUNTER



1004 CHARCOAL



017 TEAL



014 NAVY



1031 GALAXY



054 NEW NAVY



046 CEIL



064 ROYAL

Features:

28" Length / Set-In Sleeves / **2 Roomy Patch Pockets** / Side Slits

65% Polyester **35%** Cotton Poplin with Soil Release

Sizes: XXS-4X



I4740 LADIES WARM-UP JACKET



015 BLACK



011 WHITE



034 HUNTER



1004 CHARCOAL



014 NAVY



017 TEAL



054 NEW NAVY



046 CEIL



Features:

28" Length / Set-In Sleeves / Front and Back Princess Seams /
Snap Front Closure / Color Matching Knit Cuffs / **2 Deep Patch Pockets**

65% Polyester / **35%** Cotton Poplin with Soil Release

Sizes: XS-4X



I4720

LADIES CARGO PANT



Inseam: 31.5" / **Petite:** 29.5" / **Tall:** 33.5"

Features:

18" Straight Leg Opening / Covered Full Elastic Waist Pant **2 Cargo Pockets** / Side Vents

65% Polyester / **35%** Cotton Poplin with Soil Release

Sizes: XXS-4X, XSP-2XP, ST-XLT



I4900

UNISEX ONE-POCKET TOP



015 BLACK



011 WHITE



034 HUNTER



1004 CHARCOAL



064 ROYAL



014 NAVY



017 TEAL



054 NEW NAVY



046 CEIL



1031 GALAXY

Features:

29" Length / Set-In Sleeves / **1 Chest Pocket with Pen Divider**

65% Polyester / 35% Cotton

Poplin with Soil Release

Sizes: XS-5X



I4920

UNISEX DRAWSTRING PANT



Inseam 31" Short: 28" / Tall: 33"

Features:

18" Leg Opening / Full Drawstring Waist **2 Pockets** — 1 Cargo Pocket and 1 Back Hip Pocket

65% Polyester / 35% Cotton Poplin with Soil Release

Sizes: XS-5X, XSSH-XLSH, XST-2XT



14843

UNISEX FIVE-POCKET PANT



015 BLACK



034 HUNTER



014 NAVY



046 CEIL


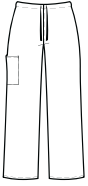
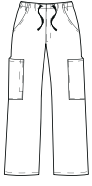


1004 CHARCOAL

Inseam: 30½" **Short:** 28½" **Tall:** 32½" **Features:**
18" Leg Opening / Drawstring with Elastic Waist / Zipper Fly Detail
5 Pockets -2 Cargo Pockets, 2 Front Hip Pockets and 1 Back Hip Pocket
65% Polyester / **35%** Cotton Poplin with Soil Release
Sizes: XS-4X, SSH-XLSH, ST-XLT

Fundamentals are affordable, durable & professionally styled to be the core of your wardrobe. Covering a range of colors and sizes, Fundamentals is our most-group friendly core line.

			
14780 UNISEX SNAP FRONT WARM-UP JACKET LENGTH 28" XS - 5X	14700 LADIES 28" 2-POCKET TOP LENGTH 28" XXS - 4X	14720 LADIES CARGO PANT INSEAM: 31.5 REG, 33.5 TALL, PETITE 29.5 XXS-4X, XSP-2XP, ST-XLT	14740 LADIES 28" WARM-UP JACKET LENGTH 28" XS - 4X
011 White	011 White		011 White
014 Navy	014 Navy	014 Navy	014 Navy
015 Black	015 Black	015 Black	015 Black
1004 Charcoal	1004 Charcoal	1004 Charcoal	1004 Charcoal
034 Hunter	034 Hunter	034 Hunter	034 Hunter
046 Ceil	046 Ceil	046 Ceil	046 Ceil
017 Teal	017 Teal	017 Teal	017 Teal
054 New Navy	054 New Navy	054 New Navy	054 New Navy
064 Royal	064 Royal	064 Royal	
	1031 Galaxy Blue	1031 Galaxy Blue	

		
14900 UNISEX 29" 1-POCKET TOP LENGTH 29" XS-5X	14920 UNISEX DRAWSTRING PANT INSEAM: 31 REG, 28 SHORT, 33 TALL XS-5X, XSSH-XLSH, XST-2XT	14843 UNISEX 5-POCKET PANT INSEAM: 30.5 REG, 28.5 SHORT, 33.5 TALL XS-4X, SSH-XLSH, ST-XLT
011 White	011 White	
014 Navy	014 Navy	014 Navy
015 Black	015 Black	015 Black
1004 Charcoal	1004 Charcoal	1004 Charcoal
034 Hunter	034 Hunter	034 Hunter
046 Ceil	046 Ceil	046 Ceil
017 Teal	017 Teal	
054 New Navy	054 New Navy	
064 Royal	064 Royal	
1031 Galaxy Blue	1031 Galaxy Blue	

All colors & styles in stock and re-orderable • Product is imported
Fabric: 65/35 Poly-Cotton Poplin with Soil Release

SIZE & FIT



Scan the QR Code to view our Fundamentals fitting video.

WOMEN'S SIZE CHART

WOMEN'S	XXS	XS	S	M	L	XL	2X	3X	4X
SIZE	0-2	4-6	8-10	12-14	16-18	20-20W	22W-24W	26W-28W	30W-32W
BUST	31-32	33-34	35-36	37 ½-39	40 ½-42 ½	44 ½-46 ½	48 ½-50 ½	52 ½-54 ½	56 ½-58 ½
WAIST	22-23	24-25	26-27	28 ½-30	31 ½-33 ½	35 ½-37 ½	39 ½-41 ½	43 ½-45 ½	47 ½-49 ½
HIPS	32 ½-33 ½	34 ½-35 ½	36 ½-37 ½	39-40 ½	42-44	46-48	50-52	54-56	58-60

MEN'S SIZE CHART

MENS	XS	S	M	L	XL	2X	3X	4X	5X
Size	30 - 32	34 - 36	38 - 40	42 - 44	46 - 48	50 - 52	54 - 56	58 - 60	62 - 64
Chest	30 - 32	34 - 36	38 - 40	42 - 44	46 - 48	50 - 52	54 - 56	58 - 60	62 - 64
Waist	24 - 26	28 - 30	32 - 34	36 - 38	40 - 42	44 - 46	48 - 50	52 - 54	56 - 58

UNISEX SIZE CHART

Size	XS	S	M	L	XL	2X	3X	4X	5X
Men's	30 - 32	34 - 36	38 - 40	42 - 44	46 - 48	50 - 52	54 - 56	58 - 60	62 - 64
Women's	4 - 6	8 - 10	12 - 14	16 - 18	20W	22W - 24W	26W - 28W	30W - 32W	34W - 36W

Products described in this catalog are made from imported fabrics.



EMBROIDERY

Smile Toothpaste



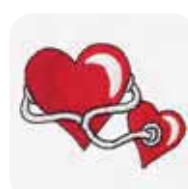
EMB-1449

Autism



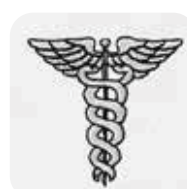
EMB-1451

Heart Stethoscope



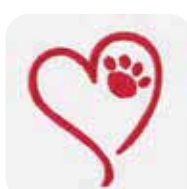
EMB-1450

Caduceus



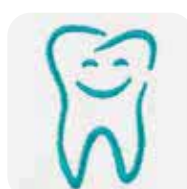
EMB-1448

Heart Paw



Black - EMB-1434
 Red - EMB-1435*
 White - EMB-1436
 Pro-Purple - EMB-1437

Happy Tooth



Black - EMB-1442
 Royal - EMB-1443
 White - EMB-1444
 Aquamarine - EMB-1445*

Dog & Cat



Black - EMB-1438*
 Royal - EMB-1439
 White - EMB-1440
 Aquamarine - EMB-1441

Hope Ribbon



Begonia - EMB-1446*
 Ruby Glint - EMB-1447

We Do Custom Embroidery

CREATE A UNIQUE IDENTITY

We offer the latest technology in embroidery design and application. Create a unique identity by adding name or job title to your customer's new uniform. Orders must be in writing and color of embroidery specified. Embroidery can be up to 4 lines.

Custom logos can be embroidered - please ask your customer service representative for a special price quote. Artwork submitted with color requirements takes two days for a price quote plus 2-3 weeks for a sample for your approval. Please allow an additional two weeks for delivery of finished garments.

We offer kaumography and paper transfer services as well.

THREAD COLORS



More thread options available upon request

*Represents color shown

TEXT STYLE



STANDARD EMBROIDERY CHART

Print Style	SIZES
Block	3/8" / 1/2" / 3/4"
Script	3/8" / 1/2" / 3/4"
Brush Script	3/8" / 1/2" / 3/4"



encompass®



With over
100 years of
experience,
we encompass
all your
professional
healthcare
wardrobe
needs!

Encompass
White Swan Brands
615 Macon Street
McDonough GA 30253
800.222.3834
www.whiteswanbrands.com

© 2023 Encompass Group
LLC All Rights Reserved.
Lit # RE23910